

[www.telephones.att.com](http://www.telephones.att.com)



## User's manual Part 2

### SB67128 DECT 6.0 Repeater

This manual contains information about this product's installation and operation. Please also read **Part 1 - Important product information**.

For customer service or product information, visit our website at [www.telephones.att.com](http://www.telephones.att.com) or call

**1 (888) 915-2007**. In Canada, dial **1 (866) 288-4268**.



# Before you install

## Parts list

---

- SB67128 DECT 6.0 repeater
- Power adapter
- Part 1 Important product information
- Part 2 User's manual
- Package of screws



Use only the power adapter supplied with this product. To obtain a replacement, visit our website at **[www.telephones.att.com](http://www.telephones.att.com)** or call **1 (888) 915-2007**. In Canada, dial **1 (866) 288-4268**.

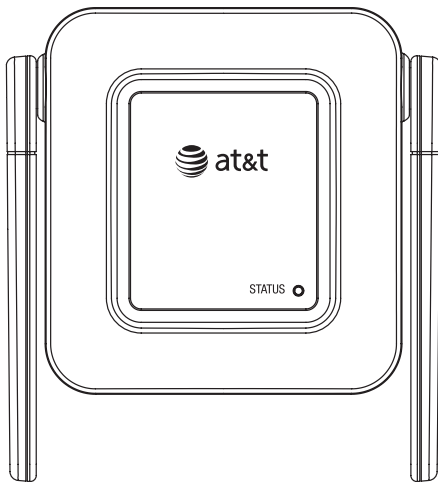


Figure 1: Repeater

# About the repeater

You can use a repeater to extend the operating range for the AT&T SB67118 DECT 6.0 4-line corded/cordless telephone system to cover areas where the signal is very weak or not available. The repeater extends the range in all directions, even going around certain barriers.

The telephone base, cordless handsets and repeaters are linked through wireless connections. When configured properly, you should not notice any reception problems as you move around within the covered area.

Up to six repeaters can be registered to the telephone base. There can be two repeaters in series going between the base and handsets. The first repeater can be up to 950 feet away from the base. The second repeater can be up to 950 feet away from the first repeater. Handsets work up to 950 feet from the base or any repeater, so with two repeaters in series, handsets work up to 2,850 feet away from the base. The figure below shows an example of how you might choose to setup your system.

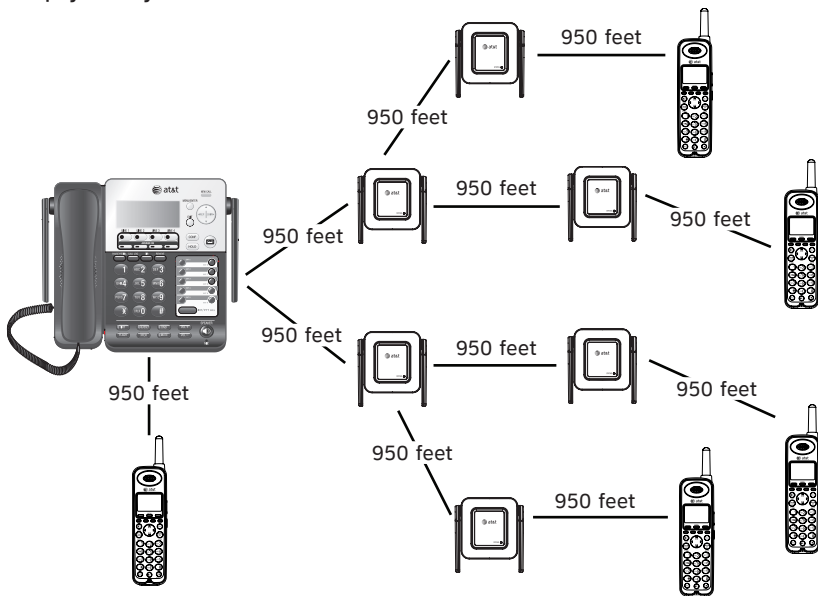


Figure 2: Planning repeater placement

# Registration

You should register your repeaters to the telephone base before choosing locations for them in the building.

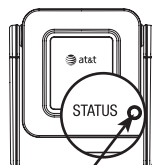


**NOTE:** You can register a repeater to an SB67118 telephone base without deregistering it from a previous telephone base. New registrations overwrite any previous repeater registrations.

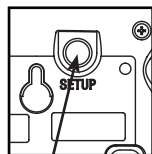
## Repeater registration

---

1. Plug in the repeater to AC power. The **STATUS** indicator light on the repeater flashes slowly.
2. Press and hold the **SETUP** button at the bottom of the repeater for two seconds. The **STATUS** indicator light on the repeater flashes quickly.
3. On the telephone base, press **MENU/ENTER**.
4. Scroll down to **Registration** and press **MENU/ENTER**.
5. Press **MENU/ENTER** again to select **Register HS**. The telephone base screen shows **Handset registering** during registration.
6. The **STATUS** indicator light becomes solidly lit when registration is successful. The telephone base screen shows **Repeater registered**. It takes about 60 seconds to complete the registration.



**STATUS**  
indicator light



**SETUP** button



### NOTES:

1. If the registration is not successful (the **STATUS** indicator light is not solidly lit after 60 seconds), the telephone base screen shows **Error**. Try the **Repeater registration** process again.
2. A registered repeater does not count as an extension and does not have an assigned extension number within the telephone system.
3. For complete registration instructions of SB67118 telephone base, please refer to the manual provided with your AT&T SB67118 product, or visit [www.telephones.att.com](http://www.telephones.att.com) to download the manual.

# Registration

## STATUS indicator light

---

<b>Slow flash</b>	The repeater is powered on and in idle mode waiting to be re-registered. <b>-OR-</b> The registered repeater is not connected to the telephone base. <b>-OR-</b> Your telephone base has no power.
<b>Quick flash</b>	The repeater is registering to the telephone base.
<b>On</b>	The repeater is successfully registered and in a normal operation mode.
<b>Off</b>	The repeater has no power.

# Installation

After you have plugged in your repeaters in the locations you think are best, place a call from a cordless handset (AT&T SB67108) and while talking, move around the building to test the reception. You may want to adjust the position of repeaters to receive the best reception.

Plug the small end of the power adapter into the power jack on the front of the repeater and route the cord through the slot on the bottom of the repeater.

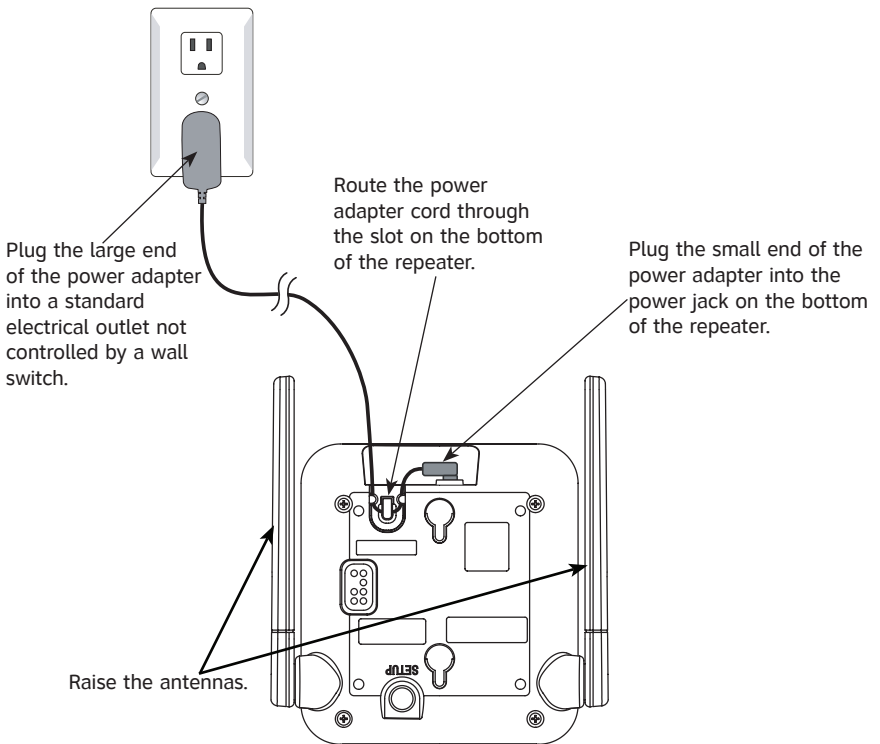


Figure 3: Connect the power adapter to the repeater

# Installation

You can place the repeater on a tabletop. You can install your repeater on a wall or other object with the provided screws. Please use the recommended placement and installation tips as follows:

- The antennas need to be in a high location (not on the floor or under a desk) for reception.
- Maintain a minimum of 30 feet distance between each repeater.
- See page 2 for additional placement information.

If you place the repeater on a tabletop, plug the large end of the power adapter into a nearby electrical wall outlet and raise the antennas.

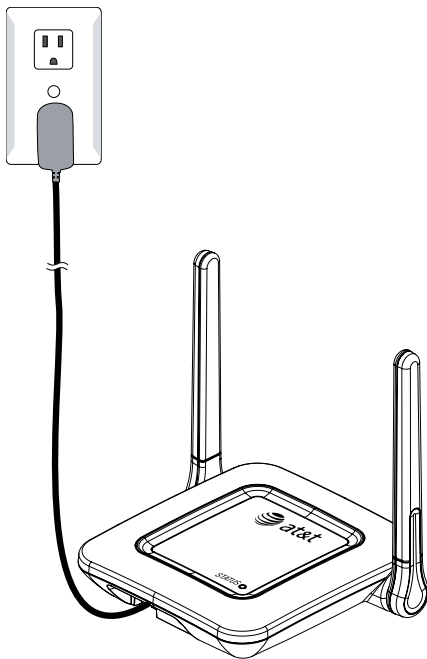


Figure 4: Tabletop installation

# Installation

If you want to install your repeater on a wall or other object, use the provided screws. Professional assistance may be required to install screws on the wall. Then plug the large end of the power adapter into a nearby electrical wall outlet and raise the antennas.

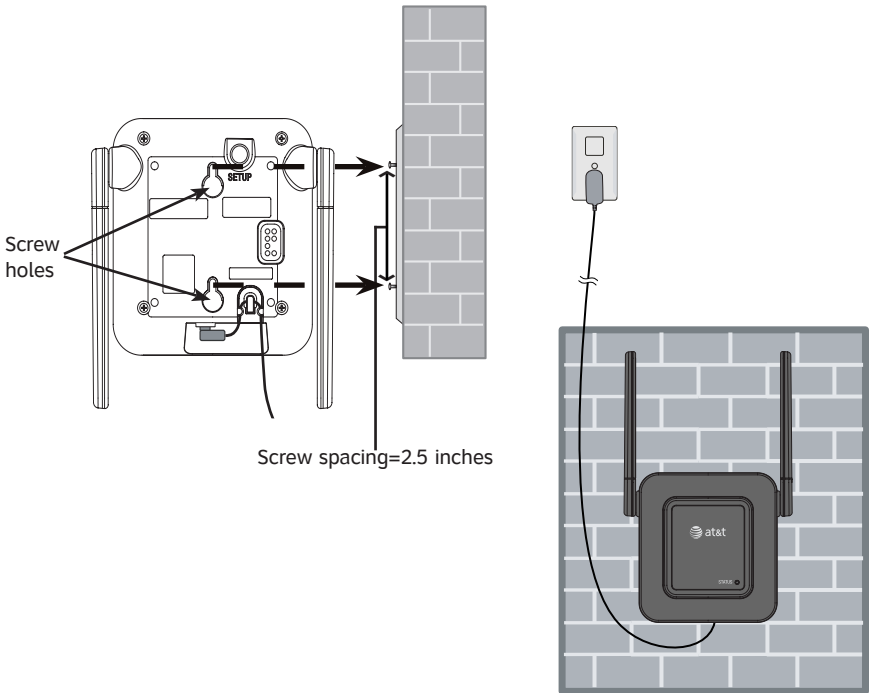


Figure 5: Wall installation



**NOTE:** The power adapter is intended to be correctly oriented in a vertical or floor mount position. The prongs are not designed to hold the plug in place if it is plugged into a ceiling, under-the-table or cabinet outlet.



# Troubleshooting

If you have difficulty operating this repeater, try the suggestions below. To contact Customer Service, purchase accessories or obtain replacement parts, visit our website at [www.telephones.att.com](http://www.telephones.att.com) or call **1 (888) 915-2007**. In Canada, dial **1 (866) 288-4268**. Please retain your receipt as your proof of purchase.

My repeater doesn't work at all.

- Make sure the power cord is securely plugged in.
- Make sure the **STATUS** indicator light is on. If the light is off or flashing, the repeater is not registered or the base has no power.
- Make sure you raise the antennas of your repeater.
- Make sure you install the repeater in a high location (not on the floor or under a desk) for better reception.
- Do not place the repeater near a microwave oven or on the same electrical outlet. You might experience decreased performance while the microwave oven is operating.
- Other electronic products can cause interference to your repeater. Try installing your repeater as far away from the following electronic devices as possible: television sets, VCRs, or other cordless telephones.
- You may need to walk to the location of your repeater and initiate a call from your cordless handset (SB67108) to test if the reception of the cordless handset is good. If the performance is less than expected, you may need to relocate your repeater closer to the telephone base. Then try placing a call on the cordless handset again.

# Troubleshooting

My repeater cannot register to my telephone base.

- First try all the suggestions on the previous page.
  - Make sure your telephone base is model AT&T SB67118 DECT 6.0 4-line corded/cordless telephone system.
  - Carefully follow the registration instructions on pages 3 of this user's manual.
  - Make sure your telephone base is within 950 feet of the repeater. If registration does not work, place the repeater next to the base and try registering again.
- 

My repeater flashes slowly again after registration.

- First try all the suggestions on the previous page.
  - Make sure the telephone base has power.
- 

I cannot deregister my repeater from the previous telephone base.

- You can register a repeater to an SB67118 telephone base without deregistering it from a previous telephone base. New registrations overwrite any previous repeater registrations.
- 

Power failure recovery.

- Your registered repeater automatically links to the telephone base wherever power is restored. The **STATUS** indicator light is on when there is a valid link.

## General product care

To keep the repeater working and looking good, follow these guidelines:

- Avoid putting it near appliances and devices that generate electrical noise (motors, fluorescent lights, etc.)
- **DO NOT** expose it to direct sunlight or moisture.
- Avoid dropping the repeater.
- Clean with a soft cloth.
- Never use a strong cleaning agent or abrasive powder because this will damage the finish.
- Retain the original packaging in case it is necessary to ship it at a later date.

# Technical specifications

RF frequency band	1921.536 MHz — 1928.448 MHz
-------------------	-----------------------------

---

Channels	5
----------	---

---

Operating temperature	32°F — 122°F 0°C — 50°C
-----------------------	----------------------------

---

Repeater voltage (AC voltage, 60Hz)	110 — 120 Vrms
--	----------------

---

Repeater voltage (AC adapter output)	6VDC @600mA
---	-------------

## Repeater operating range

---

This repeater operates within the maximum power allowed by the Federal Communications Commission (FCC). Even so, this product can communicate over only a certain distance — which can vary with the locations of the telephone base, the weather, and the construction of your building.